

www.cantronic.com

Overview

ThermalRanger 4000 series is an extremely high sensitivity thermal infrared imaging camera using an InSb or MCT 320x256 IRFPA detector operating in the middle infrared wavelength 3-5 μm region (MWIR). The **ThermalRanger 4000** is a powerful ultra long range security surveillance product with exceptional detection capability, over 20km for a tank sized object and over 17km for a human sized object.

The **ThermalRanger 4000** incorporates advanced cooled FPA technology with 30 micron pitch and pressurized dry nitrogen environmental enclosure simplifying installation and operation under demanding weather conditions. It can also be used as a standalone solution or be integrated with the user's existing system.

Outstanding Features

- 320x256 InSb or MCT IRFPA cooled detector
- Detection distance up to 20km (12.5miles)
- Motorized lens
- Plug and play operations
- Single FOV, dual FOV and triple FOV available
- Remotely controlled operation
- Pressurized housing for marine environment
- Germanium infrared window to filter unwanted light/radiation
- Optional digital video output for max. image clarity

Performance Options & Accessories

- Sun Shroud
- Pan and Tilt Drive
- Mounting Bracket
- Wide range of lens selection
- Customized lens are available

Product Image

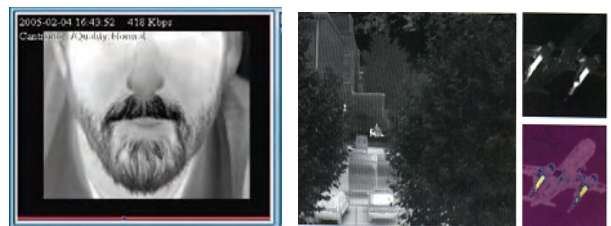
TR4000 Ultra Long Range High Sensitivity Thermal Security Camera



Applications

This unique combination of night vision power is Cantronic's solution to the increase need for security and homeland protection at a broad range of facilities and infrastructure such as:

- Bridges; Airports; Seaports; Subways
- Military Facilities
- Nuclear Power Plants
- Perimeter Security
- Industrial Applications
- Governmental Facilities



With the nominal aperture F/4, the following lenses are available:

Lens (mm)	Focus Method	FOV (°)	Max. Detection Distance km (mile)	
			Human	Automobile
50	Manual	11 x 8.2	1.0 (0.62)	2.2 (1.37)
100	Motorized	5.5 x 4.1	2.0 (1.25)	4.6 (2.87)
250	Motorized	2.2x 1.65	4.6 (2.87)	10 (6.25)
50/250	Dual FOV Motorized	11 x 8.2/2.2 x 1.65	4.6 (2.87)	10 (6.25)
100/500	Dual FOV Motorized	5.5 x 4.1/1.1 x 0.83	8 (5)	17 (10.6)
250/500/1000	Triple FOV Motorized	2.2x1.65/1.1x0.83/0.55x0.41	17.5 (10.9)	20 (12.5)